



Forward Thinking, High Achieving.

SEELEY-SWAN HIGH SCHOOL

Our proposal addresses areas of critical need, including the addition of a dynamic stage and theater facility.



A systemwide initiative to develop schools that work smarter for our students.

MEET YOUR
SMART SCHOOLS
TEAM

The Seeley-Swan High School team put months into this process. We appreciate the input from students, parents, faculty, neighbors and the MCPS board. If you have questions or would like to get involved, we encourage you to visit www.mcpsmt.org/seeleyswan or contact Principal Kathleen Pecora at kpecora@mcps.k12.mt.us.

TEAM MEMBER CORE

Kathleen Pecora, Administrator
Christel Vasko, Teacher
Shauna Anders, Classified
Dee Schmitz, Business
Kyndee Schmitz, Student

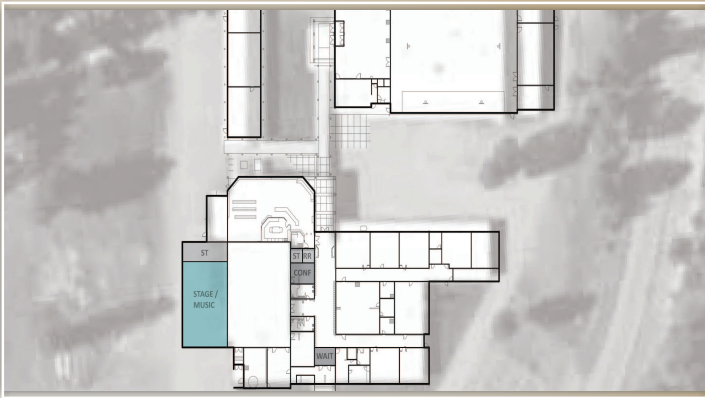
21ST CENTURY NEEDS

Seeley-Swan High School was constructed in 1964 with the intention of adding a theater. That construction was never realized. Creating both a school resource and a community resource, this addition would significantly and positively impact student performances and curriculum as well as provide an outstanding venue for local performances. No matter which side of the footlights people may find themselves, those involved span a diversity of age, culture and life experience.

EXPANDING SEELEY-SWAN HIGH SCHOOL

Bringing a theater into Seeley-Swan High School will generate a strong appreciation of the importance of the arts. Seeley-Swan High School students and rural community members will benefit as they come together for the arts, creating a truly integrated community. When complete, Seeley-Swan will be a smarter school in many ways, including:

- Addition of a theater; this is fiscally prudent as the building was originally designed to support theater.
- Appropriate practice areas for band, choir and drama classes.
- Barn doors or garage doors, acoustically insulated, to provide flexible space for both large and small groups.
- Updated learning areas for projects, presentations and technology.
- Safe and secure classroom for health enhancement classes.
- Storage areas to support 21st century learning.



OUR TEAM'S RECOMMENDED OPTION

OPTION E-1 EXPAND:

- Stage, music, storage.
- Security and accessibility.
- Deferred maintenance/energy.
- Technology improvements.

SECURITY

Modify facility to create obvious main entry, secure waiting area and ability to observe visitors approaching the building. Subdivide the building into secure zones with electronically activated door closers.

TECHNOLOGY

Develop high-speed/high-volume fiber optic distribution to breakout spaces for projects, presentations and technology in each learning community, enhanced with robust wireless and hard-wired access points.

ENVIRONMENT

Install barn doors and garage doors with quality acoustical materials between learning areas and breakout areas for projects, presentations and technology. Create small learning communities for teams of teachers and students that include traditional classrooms as well as important support spaces for 1:1 tutoring, small groups, planning centers, storage, etc.

FACILITIES STRATEGIC PLAN

Site Area: 50.94 acres
Parking Spaces: N/A
Building Square Footage
Existing: 46,072
New: 2,500
Estimated Project Budget: \$2,199,791*
Replacement Cost: \$8,465,000
Remaining Deferred Maintenance & Energy Project Costs: \$0
Rental / Lease / Sale Income: None
Current Enrollment: 111
Future Peak Enrollment: 115
Capacity: 259

*All costs are projected based on industry averages for building costs, sizes and land prices. Final project budget will be developed during the design phase.





NOW IS THE TIME TO INVEST IN SMARTER SCHOOLS

Education has never been more important than it is today. Our students face international competition for scholarships and jobs, and an increasing pace of change that impacts their futures. Yet, while the need for quality education continues to increase, our schools are physically in decline.

At Missoula County Public Schools, we realize that we must change if we're to keep up academically and economically as a community. That's why we launched Smart Schools 2020. Led by teams from each school, the initiative assesses needs by facility and prioritizes those needs in light of achieving our goals of a 21st Century Educational Culture and of being fiscally responsible.

By addressing schools now we prevent further deterioration of facilities, better prepare for population growth and ensure our students continue to get the educational opportunities they need to succeed in school and beyond.

THE SMART SCHOOLS PROCESS

SCHOOL CENTRIC:

Criteria and preferred options were established for each school by a team of teachers, administrators, students and parents from that school, along with members of the area community.

COLLABORATIVE:

Alternatives were shared at public meetings at each school. In addition, surveys were sent out systemwide to vet priorities.

REALISTIC:

Team recommendations were reviewed by the steering committee and the elected board of trustees before a bond measure was drafted.

PUBLIC:

Everyone is invited to review options and weigh in. Final support for the initiative will be determined by public election in November 2015.



To get involved, please visit www.mcpsmt.org/seeleyswan or contact Principal Kathleen Pecora at kpecora@mcps.k12.mt.us.